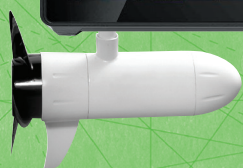


# HD GPS ANCHOR+<sup>®</sup>

Precision GPS Guided Trolling Motor  
MFD Gateway



MFD Gateway  
Connectivity

**RHODAN**<sup>®</sup>  
MARINE SYSTEMS

[www.rhodanmarine.com](http://www.rhodanmarine.com)

# HDGPS ANCHOR+<sup>®</sup>

## MFD GATEWAY CONNECTIVITY

The Rhodan Gateway will allow any Rhodan motor **with a serial number of R587363 or higher** to connect with compatible Simrad<sup>®</sup>, Raymarine<sup>®</sup> and Lowrance<sup>®</sup> devices\*.

\* Hardware may need to be updated.

If the Rhodan motor has only LEDs on the rear ACM with no pigtail, an update is possible to add the Proprietary Rhodan connectivity extension cable and firmware update.



**WARNING!**  
READ AND UNDERSTAND ALL INSTRUCTIONS. Failure to follow all enclosed instructions may result in personal injury or loss of warranty.

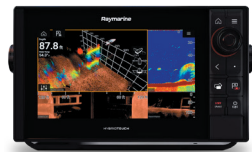


**WARNING!**  
Use of the Rhodan Gateway in conjunction with an MFD can cause the boat to move unexpectedly. Captain must maintain control of the vessel while in advanced trolling motor modes.

Before installing the gateway cable, ensure the MFD has been updated to the latest firmware release available at the Simrad, Raymarine and Lowrance websites. Please follow Simrad, Raymarine or Lowrance instructions to update:



<https://www.simrad-yachting.com/help--support/Software-Upgrade/>



<https://www.raymarine.com/en-us/download/lighthouse-4-update-for-axiom-chartplotters>



<https://www.lowrance.com/downloads/>



### PARTS INCLUDED:



RHODAN GATEWAY



6' NMEA 2000 CABLE

30' RHODAN PROPRIETARY CABLE



NMEA 2000 T-CONNECTOR

## INSTRUCTIONS

### SIMRAD/LOWRANCE/RAYMARINE

1. Ensure Rhodan trolling motor has been properly installed and is functioning properly.  
Note: Instructions are located in Rhodan Owner's Manual.
2. Ensure MFD (Multi-Function Display) has been updated and is functioning properly.
3. MFD must have NMEA backbone installed prior to Gateway installation.
4. If there are no available ports on the NMEA backbone, insert the provided NMEA 2000 T-connector into the NMEA backbone on the vessel. Terminals on the backbone will need to be disconnected to allow insertion.
5. Insert the male end of the provided 6' NMEA cable into the available port on the NMEA backbone.
6. Insert the female end of the provided 6' NMEA cable into the port on the Gateway labeled NMEA 2000.
7. Insert the female end of the provided 30' Rhodan cable to the Gateway port labeled Trolling Motor.
8. Connect the male end of the provided 30' Rhodan cable to the port exiting the rear cover of the trolling motor. (Cap must be removed from trolling motor cable.) The port is shown to the right. If the motor has a serial number of R661227 or higher, you will need to remove the rear plastic cover in order to access the gateway port. It can then be routed outside the plastic cover as shown in the photo. *Do not connect the NMEA 2000 cable to the trolling motor. Doing so can cause damage to the trolling motor.*
9. Power up the trolling motor.



Note: The Gateway has the ability to update the current electronic package on the trolling motor. Once the gateway is hooked up, please allow 10 or so minutes of idle time for the system to update. Disregard any lights, beeps or alarms the unit may emit during this process.

10. Power up the MFD.

### SIMRAD/LOWRANCE ONLY (RAYMARINE SKIP TO STEP 15)

11. The left side of the MFD should display a button labeled "TROLLING". Press this button to view the available modes for the trolling motor operation.
12. To operate the trolling motor on the MFD, select the button labeled "TROLLING." After entering the trolling menu, select the black icon with one of the following modes listed.
  - a. ANCHOR HERE – This button will anchor the vessel at its current location.
  - b. ANCHOR CURSOR – Pressing this button will anchor the vessel at the location of the cursor on the MFD.
  - c. ANCHOR WPT. – Pressing this button will allow you to choose a waypoint to anchor at.
  - d. HEADING LOCK – Pressing this button will keep the vessel's heading on a given course.
  - e. NAV – Allows you to navigate the vessel to a given waypoint or location via the trolling motor.
13. Change the default Auto Pilot setting.
  - a. Press the menu button in the top left corner of the MFD to enter the menu screen.
  - b. In the Menu screen, press the Settings button in the top left corner to enter the Settings menu.
  - c. In the Settings menu, select "Autopilot".
  - d. Next to the Arrival Mode, select the drop down and choose "anchor".
  - e. Exit the settings menu and begin using the gateway.

14. (Optional) To set up the Rhodan GPS sensor on MFD for use via the Gateway:
  - a. Press the Menu button in the top left corner of the MFD to enter the Menu screen.
  - b. In the Menu screen, press the Settings button in the top left corner to enter the Settings menu.
  - c. In the Settings menu, select "Satellites" to change satellite settings.
  - d. From the satellite setting menu, under the heading "GPS Source," select the "Change" button to change the GPS source from the standard MFD GPS to "RMS-EM-1".
  - e. Exit the settings menu to begin use.

Note: Above is an optional adjustment you can make in the MFD settings and it can be swapped back and forth between the two GPS sources. If the Rhodan GPS source is chosen, it may interfere with the outboard auto pilot while the Rhodan is on. Also, if the option above is selected the trolling motor must be powered on in order to acquire GPS. If the trolling motor is powered off, you will need to toggle back to MFD gps source in order to acquire gps signal.

**For more information, please consult your MFD instruction manual.**

## RAYMARINE ONLY

15. The left side of the MFD has a "pullout" which must be open for the "Trolling" option to be selected. Press the "Trolling" button to view the available modes for operating your Rhodan from the MFD. (Motor must be deployed to see trolling motor options)
16. The following Modes should be listed once entering the "Trolling" mode.
  - Manual – The button gives you the ability to control the motor in manual mode.
  - Anchor Here – This button will anchor the vessel at its current location.
  - Hold Heading – Pressing this button will keep the vessels heading on a given course.
  - Nav Mode – Allows you to navigate the vessel to a given waypoint or location via the trolling motor.

**For more information on your Raymarine gateway, please visit:**

<https://www.raymarine.com/en-us/learning/online-guides/rhodan-trolling-motor-integration>



## SIMRAD/LOWRANCE/RAYMARINE NOTE

To learn the FOB to the gateway, hold down buttons 2 and 3 on the FOB until the trolling motor begins beeping. Then hold down the OFF button on the FOB until the motor stops beeping. To erase the FOB from the gateway, hold down buttons 3 and 4 on the FOB until the motor begins beeping. Wait for the trolling motor to stop beeping and the FOB will be unpaired from the gateway.



### **WARNING!**

**The Rhodan gateway uses modes that will allow the motor to steer and thrust itself. If the motor is operating with unexpected behavior, please discontinue use and contact Rhodan for information on proper use.**

**RHODAN**<sup>®</sup>  
MARINE SYSTEMS

### **CUSTOMER SERVICE**

Have your unit serial number ready and call:  
**941-706-4578**